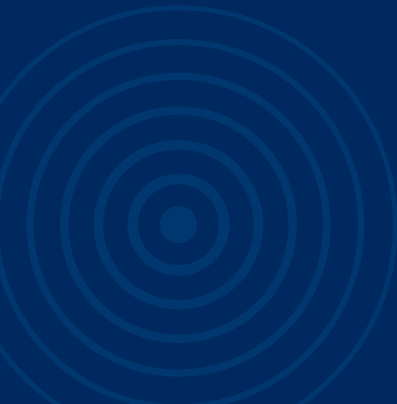


# FULL-TIME COURSE GUIDE

24/25





Somerset  
Valley

City  
Centre

# WELCOME TO BATH COLLEGE

Welcome to Bath College and our full-time course guide for the 2024/2025 academic year. We are glad that you're interested in finding out more about what we offer and how we could be part of your future. We have streamlined this year's guide so you can quickly find the course that can get you the career you want. This guide covers all levels we offer, from foundation up to degree level.

Our two campuses are great places to learn, and we are very proud of the fact they have friendly, supportive and welcoming atmospheres. Our Somer Valley Campus in Westfield by Radstock is located in lovely countryside and our City Centre Campus is in the middle of beautiful Bath.

If you're interested in finding out more, contact us, join one of our open events or pop in and book a campus tour. We look forward to hearing from you and hope you join a course that will help you get the future you want.

With best wishes,

*Jayne Davis*

Principal and Chief Executive

## CONTENTS

▶ Course Level Guide .....	5
▶ T-Levels.....	7
▶ UCAS Tariff Points Explained.....	8
▶ Key Information.....	9
▶ Apprenticeships .....	13
▶ Foundation Learning.....	15
▶ Access to HE.....	25
▶ Art & Design .....	27
▶ Music & the Performing Arts .....	29
▶ Digital .....	31
▶ Business .....	33
▶ Animal Management.....	35
▶ Hair, Beauty & Spa Therapies.....	37
▶ Health.....	39
▶ Sport & Sports Academies.....	41
▶ Early Years & Education .....	43
▶ Hospitality & Tourism .....	45
▶ Protective Services & Social Sciences .....	47
▶ Construction Trades.....	49
▶ Engineering & Mechanics.....	51
▶ Campus Maps and College Addresses.....	53

# STUDY PROGRAMME LEVEL GUIDE

Courses at Bath College range from entry level all the way up to degree level (Level 4+). This guide can help you understand.

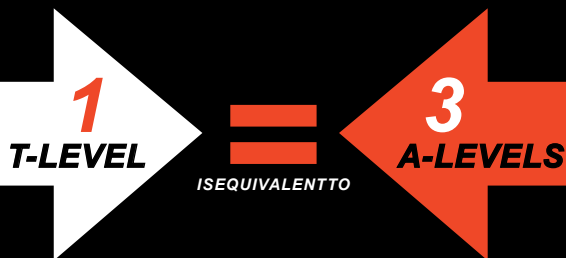
<b>Entry Level</b>	<b>Foundation</b>	<b>Intermediate</b>	<b>Advanced</b>	<b>Higher</b>
<b>ENTRY</b>	<b>LEVEL 1</b>	<b>LEVEL 2</b>	<b>LEVEL 3</b>	<b>LEVEL 4+</b>

Entry Level	<p><b>ENTRYLEVEL</b></p> <p>If you have no qualifications or expect to need support with your future learning.</p>	<p><b>QUALIFICATIONS</b></p> <ul style="list-style-type: none"> <li>• Foundation Learning at Entry Level</li> <li>• Functional Skills at Entry Level (<i>English, maths, and ICT</i>)</li> <li>• Awards Certificates and Diplomas at Entry Level</li> <li>• Entry Level Certificates</li> <li>• Skills For Life</li> </ul>	<p><b>OPTIONS</b></p> <p>You could move onto a Level 1 course.</p>	Intermediate	<p><b>LEVEL 2</b></p> <p>If you have 4 GCSEs at grade 3 or above, including English and Maths. <i>Note:</i> Some Level 2 programmes may require a grade 4.</p>	<p><b>QUALIFICATIONS</b></p> <ul style="list-style-type: none"> <li>• GCSEs grades A*-C/9-4</li> <li>• Functional Skills at Level 2</li> <li>• BTEC Awards, Certificates, and Diplomas at Level 2</li> <li>• Key Skills Level 2</li> <li>• NVQs at Level 2</li> <li>• T-Levels Transition Programme</li> </ul>	<p><b>OPTIONS</b></p> <p>You could move onto a Level 3 course or into a job with training or an apprenticeship.</p>	2 Years
	<p><b>LEVEL 1</b></p> <p>If you have basic qualifications or grade 1/2 or above in Maths and English.</p>	<p><b>QUALIFICATIONS</b></p> <ul style="list-style-type: none"> <li>• Foundation Learning Tier pathways</li> <li>• Functional Skills at Level 1</li> <li>• BTEC Awards, Certificates and Diplomas at Level 1</li> <li>• BTEC Introductory Diplomas and Certificates</li> <li>• NVQs at Level 1</li> </ul>	<p><b>OPTIONS</b></p> <p>You could move onto a Level 2 course or an apprenticeship.</p>		<p><b>LEVEL 3</b></p> <p>If you already have at least 4 or 5 grade A* C/9-4 GCSEs (including English and/or maths), BTEC Diploma, NVQ 2 or equivalent.</p>	<p><b>QUALIFICATIONS</b></p> <ul style="list-style-type: none"> <li>• A-Levels</li> <li>• GCSE in applied subjects</li> <li>• International Baccalaureate</li> <li>• Key Skills Level 3</li> <li>• NVQs at Level 3</li> <li>• BTEC Awards, Certificates, and Diplomas at Level 3</li> <li>• T-Levels</li> </ul>	<p><b>OPTIONS</b></p> <p>You could progress into higher education, an apprenticeship or a wide range of jobs.</p>	
Foundation	<p><b>LEVEL 4+</b></p> <p>If you already have your A-levels, a BTEC National Certificate/ Diploma, Access to HE or an NVQ 3.</p>	<p><b>QUALIFICATIONS</b></p> <ul style="list-style-type: none"> <li>• Foundation Degrees</li> <li>• Honours Degrees</li> <li>• HNCs/D's</li> <li>• NVQs at Level 4 BTEC</li> <li>• Professional Diplomas, Certificates and Awards</li> <li>• Other higher diplomas</li> </ul>	<p><b>OPTIONS</b></p> <p>You will have access to a much wider range of careers, or you could go into further study at professional training.</p>	Higher	<p><b>LEVEL 4+</b></p> <p>If you already have your A-levels, a BTEC National Certificate/ Diploma, Access to HE or an NVQ 3.</p>	<p><b>QUALIFICATIONS</b></p> <ul style="list-style-type: none"> <li>• Foundation Degrees</li> <li>• Honours Degrees</li> <li>• HNCs/D's</li> <li>• NVQs at Level 4 BTEC</li> <li>• Professional Diplomas, Certificates and Awards</li> <li>• Other higher diplomas</li> </ul>	<p><b>OPTIONS</b></p> <p>You will have access to a much wider range of careers, or you could go into further study at professional training.</p>	2-3 Years

# T-LEVELS

## WHAT ARE T-LEVELS?

T-Levels are a new qualification aimed at students aged 16-19 who are following on from their GCSEs. These are Level 3, full-time courses which takes two years to complete.



**TRANSFERABLE  
WORKPLACE  
SKILLS**

**WORK  
PLACEMENT  
IN INDUSTRY**

## WE OFFER THESE SUBJECT AREAS:

- ▶ Hairdressing, Barbering & Beauty Therapy
- ▶ Digital Product, Design & Development
- ▶ Business Management & Administration
- ▶ Engineering & Construction
- ▶ Digital Support Services
- ▶ Education & Childcare
- ▶ Health



[bathcollege.ac.uk/t-levels](http://bathcollege.ac.uk/t-levels)

## UCAS TARIFF POINTS EXPLAINED

UCAS Tariff points translate your qualifications and grades into a numerical value. Many qualifications (but not all) have a UCAS Tariff value, which will vary dependent on the qualification size, and the grade you achieved. This numerical value is used by HE course providers to assess whether you meet their entry requirements for a particular course. This guide helps you translate BTEC Level 3 and T Levels into their A Level equivalent grade.

T-LEVEL	Tariff Points
Distinction*	168
Distinction	144
Merit	120
Pass (C+ on the core)	96
Pass (D/E on the core)	72

**A Levels are not the only route to University.**  
All of our Level 3 programmes and T-Levels carry UCAS points.

BTEC Level 3 Extended Diploma	Tariff Points
D* D* D*	168
D* D* D	160
D* D D	152
D D D	144
D D M	128
D M M	112
M M M	96
M M P	80
M P P	64
P P P	48

A LEVEL	Tariff Points
A*	56
A	48
B	40
C	32
D	24
E	16

Please visit the UCAS website to find out more and use their calculator for the most accurate breakdown of your tariff points.



[ucas.com/tariff](http://ucas.com/tariff)

For UAL and other Level 3 qualifications, please check the UCAS website

## KEY INFORMATION



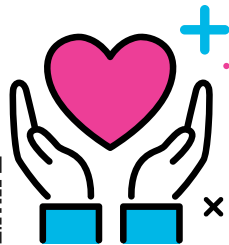
### ADVICE & GUIDANCE

Our Student Services in The Hive at City Centre and the Student Advice Centre at Somer Valley offer our students a range of support. Our Careers Advisers can help you with big decisions like going to university, changing course or with jobs.

We can also help you with employability skills, volunteering opportunities and work placements. Come and see us!

### WELL-BEING & WELFARE SUPPORT

We have a dedicated welfare team who can offer support if you're feeling anxious or having any problems you want to talk through confidentially.



### STUDENT FACILITIES

Both campuses have a café and a library. At City Centre you can also make use of the Hair and Beauty Academy and at Somer Valley there's plenty of outdoor space for sport.

### FUNDING

If you're 16-18 then you will have free core tuition. There may be some additional fees with certain courses that require kit or uniform – you will be informed of this, but ask if you have any questions.

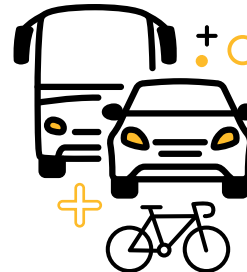


### FINANCIAL SUPPORT (BURSARIES)



If you are struggling financially, you may be eligible for some funds to help you get into College or help pay for your kit and uniform – please ask for further details.

### TRANSPORT



City Centre Campus is a short walk from Bath Spa bus station and rail station, making it very easy to get to by public transport.

Somer Valley Campus is located close to Radstock, which is served by many public buses and we also have a number of College buses serving the wider area, depending on demand.

Talk to us for specific details of how to travel from where you live.

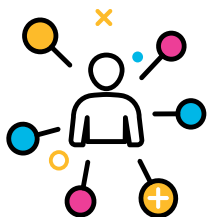


## KEY INFORMATION

### STUDENTS' UNION

Every year we hold student elections for you to have the chance to join students across subjects and campuses make Bath College a better and more fun environment.

Positions include Events Officer, Green Officer, Equality & Diversity Officer and Inclusion Officer, to name a few. You can also volunteer as a course representative, giving you the chance to champion change.



### STUDENT ACTIVITIES

The Students' Union create clubs and societies each year to suit the cohort, which have included film clubs, LGBTQIA+ society, crafts and more.

On Wednesday afternoons, all students take part in a Personal Development Framework activity of their choice, which ranges from basketball to knitting to gap year planning.

**FOR MORE INFORMATION,  
PLEASE VISIT OUR WEBSITE:**



### PARENTS/CARERS INFO

Making the decision to move on from school is an important moment in a young person's development. It also represents a change for many parents and carers from the familiar relationship they have built up with schools throughout their child's education. We welcome the chance to work alongside parents and carers to support young people during their time at college. A full Q&A for parents and carers can be found on our website.



### SCHOOLS INFO

Our School Liaison Service is aimed at bridging the transition between school and College. We can offer services to both Primary and Secondary Schools, as well as alternative provision.

We best cater to providers based in the Bath, Somerset, Wiltshire and Bristol areas, but can travel or deliver digitally further afield, provided this is arranged in advance. Please get in touch with our School Liaison Co-ordinators via [schools@bathcollege.ac.uk](mailto:schools@bathcollege.ac.uk) to discuss how we can help, and to sign up to our mailing list to receive updates about our events and other exciting information & offers.

# APPRENTICESHIPS

## Are they for you?



SCAN FOR  
APPRENTICESHIPS  
and live  
VACANCIES

to find out more email:  
[apprenticeships@bathcollege.ac.uk](mailto:apprenticeships@bathcollege.ac.uk)  
or call 01225 328 752

## WHAT ARE THEY?

An apprenticeship is a real job where you learn, gain experience and get paid. We offer apprenticeships in 13 different sectors:

- Animal Care
- Automotive Engineering
- Business & Professional
- Construction Professional
- Construction Trades
- Education & Early Years
- Engineering & Manufacturing
- Finance & Accounting
- Hair, Beauty & Holistic Therapies
- Health & Social Care
- Hospitality & Catering
- IT & Digital
- Sales & Marketing

[bathcollege.ac.uk/apprenticeships](https://bathcollege.ac.uk/apprenticeships)



# FOUNDATION LEARNING

Our Foundation Programmes meet a range of needs for learners with Special Educational Needs and Disabilities (SEND), Social, Emotional and Mental Health Needs (SEMH), or other barriers to their learning. Learners generally have an Education, Health and Care Plan (EHCP).

## COURSES INCLUDE:

- + Sensory Pathways for Adulthood (Pre Entry Level)
- + Pathways for Adulthood Programme (Pre Entry Level)
- + Life and Independent Living Skills (LILS) (Entry Levels 1, 2 and 3)
- + Step Up (Entry Level 3/Level 1)
- + Traineeship (Entry Level 3/Level 1)

## ALTERNATIVE PROVISION:

- + Learning 4 Work
- + Partnership 4 Learning
- + Bath Rugby Foundation

# WHAT CAN I DO?

## PRE-ENTRY LEVEL

- Sensory Pathways for Adulthood Programme
- Pathways for Adulthood Programme

## ENTRY LEVEL

- Life and Independent Living Skills (LILS)
- Traineeship
- Step Up

## LEVEL 1

- Traineeship
- Step Up

## ALTERNATIVE PROVISION:

- Learning 4 Work
- Partnership 4 Learning
- Bath Rugby Foundation



SCAN ME FOR UP  
TO DATE COURSES  
IN THIS SECTOR



# SENSORY PATHWAYS FOR ADULTHOOD PROGRAMME

## PRE-ENTRY LEVEL

Our specialised sensory pathway offers a highly structured curriculum tailored to meet the needs of young people with more complex needs. It encompasses all the essential aspects of a study program, ensuring that learners receive an inclusive education. Throughout this course, learners will engage in various subjects such as life skills, mathematics, and English, as well as participate in small group sessions that aim to assist them in achieving their EHCP (Education, Health and Care Plan) objectives.

Our dedicated team will provide support to enhance learners' communication skills, financial literacy, personal safety awareness, teamwork abilities, problem-solving, and turn-taking skills.

The SPA program is delivered at our Wellow SEND Centre at our Radstock, Somer Valley Campus in a safe and inclusive environment equipped with specialised facilities, including an adapted wet room, hoist, specialist toilet, and changing facilities.

### Options after this course

You could progress on to:

- Supported Volunteering
- Supported Employment
- Supported Living

# PATHWAYS FOR ADULTHOOD PROGRAMME

## PRE-ENTRY LEVEL

Pathways for Adulthood aims to support young people into adulthood with employment, good health, independent living skills, relationships and community inclusion. The PfA curriculum extends beyond the academic, technical or vocational learning and provides learners with broader development, enabling them to develop and discover their interests and talents.

It is delivered at the Wellow SEND Centre at our Radstock, Somer Valley Campus through a variety of strategies and skills, including:

- Multi-Sensory Learning
- Communication Strategies
- Life Skills
- Physical Activities
- Social Interaction
- Family Involvement

### Options after this course

You could progress on to:

- LILS
- Volunteering
- Supported Employment
- Supported Living

This is an appropriate course for learners who are capable of achieving at Entry 3 or Level 1 during the academic year.



# LIFE AND INDEPENDENT LIVING SKILLS (LILS)

## ENTRY LEVELS 1, 2 AND 3

The life and independent living skills course is designed to build upon the learner's sense of self and equip them with the skills to gain greater independence and become an active member of their community.

By developing crucial life skills, participants will gain knowledge and experience to enhance personal growth and well-being across many areas including, domestic, financial, travel, participation, and work-based learning to support their progression into adulthood and further learning opportunities.



Our LILS course is delivered at both our Somer Valley, Radstock Campus, and our City Centre Campus through a variety of strategies and skills including:

- Self-Management
- Financial Literacy
- Health and Wellness
- Home Management
- Communication Skills
- Problem-Solving
- Safety and Emergency Preparedness
- Transportation and Mobility
- Social Skills
- Community Engagement

### Options after this course

You could progress on to:

- Traineeships
- Step Up
- Level 1 course
- Employment
- Supported Living

## STEP UP .

### ENTRY LEVEL 3/LEVEL 1

The Step-Up Course is a comprehensive program, designed to help young people develop essential knowledge, skills and behaviour that will empower each individual to pursue a career in their chosen vocational area through emotional, social and educational support and development to enhance their personal growth. The Step-Up Course has been designed as a 'transition' course, to allow young people who may have been out of education for a while, or disengaged in education to re-engage, and allow them to flourish to their fullest potential.

Our Step Up course is delivered at both our Somer Valley, Radstock Campus, and our City Centre Campus through a variety of strategies and skills including:

- Self-Discovery and Awareness
- Goal Setting and Planning
- Communication Skills
- Emotional Intelligence
- Stress Management
- Creativity and Innovation
- Safety and Emergency Preparedness
- Transportation and Mobility
- Social Skills
- Community Engagement
- Financial Literacy

#### Options after this course

You could progress on to:

- Traineeships
- Level 1/Level 2 vocational course
- Employment
- Volunteering
- Apprenticeships

## TRAINEESHIPS

### ENTRY LEVEL 3/LEVEL 1

The 'Traineeship' course is a structured training program that provides individuals with the knowledge, skills and behaviours to gain practical work experience and develop specific skills in a particular industry or profession, providing the learners, the skills and experience needed to support their chosen career pathway.

Traineeship is delivered at our city centre campus. The course can last up to a year, depending on the industry that the young person is interested in, and the job opportunities available;

- Maths and English
- Training and Learning
- Industry Focus
- Career Progression

#### Options after this course

- Apprenticeship
- Employment
- Volunteering



## ALTERNATIVE PROVISION:

### PARTNERSHIP 4 LEARNING

The Partnership for Learning course is for young people who require a more flexible personalised learning offer and are socially isolated, have high levels of anxiety/mental health needs. We provide very flexible support, this can be provided at home, in the community or at our youth and community hub. We work together with young people, families and carers to identify a personalised learning journey and build confidence to access wider community options.

The Partnership for Learning course is for young people who require a more flexible personalised learning offer and are socially isolated, have high levels of anxiety/mental health needs. We provide very flexible support, this can be provided at home, in the community or at our youth and community hub.

### BATH RUGBY FOUNDATION

Phase is delivered in partnership with Bath Rugby Foundation, our primary focus is to empower young people to acquire the fundamental knowledge, skills, and attitudes needed for a successful transition into adulthood. This program goes beyond traditional academic support, offering comprehensive assistance in emotional, social, and educational aspects to nurture personal growth in each participant. At its core, the course has been meticulously crafted as a transformative journey, tailored specifically to reignite the passion and engagement of those who may have experienced.

### LEARNING 4 WORK

Learning for Work is delivered in partnership with Youth Connect, it is a course designed for young people who cannot access mainstream college provision. We succeed in engaging young people in education. The course is for young people who have previously had disrupted schooling and whom often believe that the education system does not meet their needs.

Our flexible approach puts the young person at the heart of what we do, letting them shape their future. The staff build genuine and supportive relationships with students, modelling resilience and determination and not giving up, providing young people with the support they need, when they need it. Key workers ensure students are kept safe, working collaboratively with families, carers and other professionals. The program offers an individualized, inclusive, creative curriculum, helping students work towards their goals and become the people they want to be.

Learning 4 Work is delivered at our satellite centres at either Radstock Youth Centre, or Southside Community Centre in Whiteway, Bath.



Southside  
Community Centre



# ACCESS TO HE

Are you looking to get back into education? If you want to go to university but do not meet the formal entry requirements, an Access to Higher Education course be the start of your journey.

The Access to Higher Education Courses will offer you the opportunity to study a range of subjects to enter a university and degree level study programme. This one-year course will bridge the gap between your current qualifications and a degree-level course.

## COURSES INCLUDE:

- + Health and Social Care
- + Science
- + Computing
- + Social Science

## UNIVERSITIES STUDENTS HAVE PROGRESSED ON TO INCLUDE:

University of Bristol • University of Bath • Bath Spa University  
Nottingham University • University of the West of England.

“  
**THE COURSE IS BRILLIANT,  
I'D RECOMMEND IT TO  
ANYONE WANTING TO GO  
ON TO HIGHER EDUCATION.**  
”

**CONNOR** Access to HE Student

# WHAT CAN I DO?

## PROGRESSION OPTIONS FOR EACH ACCESS PATHWAY:

### HEALTH & SOCIAL CARE

- Adult Nursing
- Paediatric Nursing
- Paramedic Science
- Social Science
- Midwifery
- Psychology
- Mental Health Nursing

### SCIENCE

- Chemistry
- Biology
- Molecular Biology
- Physiotherapy
- Nutritional Science
- Veterinary Science
- Geology
- Dentistry

### SOCIAL SCIENCE

- Criminology
- Education
- History & Law

### COMPUTING

- Information Technology
- Computing
- Business

### CAREER OPTIONS INCLUDE:

Nurse  
Writer  
Lawyer  
Teacher  
Engineer  
Ecologist  
Paramedic  
Social Worker

**SCAN ME FOR UP  
TO DATE COURSES  
IN THIS SECTOR**



# ART & DESIGN

## COURSES INCLUDE:

- + Introduction to Art and Design (Level 1)
- + Photography and Graphic Design (Level 2)
- + Fashion, Business and Retail (Level 2)
- + Art and Design (Level 2 & 3)
- + Fashion and Textiles (Level 3)
- + Photography (Level 3)
- + Graphic Design (Level 3)
- + Art and Design Foundation (Level 4)

**“ I LOVE THE FREEDOM I HAVE THAT ALLOWS ME TO BRING MY IDEAS TO LIFE. YOU LEARN ALL THE SKILLS AND TECHNIQUES YOU WILL NEED TO HELP YOU ALONG THE WAY WHICH IS A BIG STEP TO FIND YOUR CREATIVE FREEDOM. ”**

**HANNAH MAGGS**  
Graphic Design Student

# WHAT CAN I DO?

## LEVEL 1

- Introduction to Art and Design

## LEVEL 2

- Photography and Graphic Design
- Fashion, Business and Retail
- Art and Design

## LEVEL 3

- Photography
- Art and Design
- Graphic Design
- Fashion and Textiles

## LEVEL 4

- Art and Design Foundation

## PROGRESSION OPTIONS

- Employment
- Degree Apprenticeship
- University Degree in sector subjects including:
  - Theatre Stage/Costume Design
  - Visual Communications
  - Fashion Design
  - Interior Design
  - Photography
  - Architecture
  - Illustration
  - Animation
  - Fine Art
  - Textiles
  - Film

## CAREER OPTIONS INCLUDE:

Illustrator  
Fine Artist  
Photographer  
Interior Designer  
Graphic Designer  
Cinematographer  
Fashion Designer  
TV or Film Director

**SCAN ME FOR UP TO DATE COURSES IN THIS SECTOR**



# MUSIC & THE PERFORMING ARTS

## COURSES INCLUDE:

- + Introduction to Music and Creative Performance Arts (Level 1)
- + Music Performance and Production (Level 2 & 3)
- + Performing and Production Arts (Level 2)
- + Bath Theatre Academy (Level 3)



**CAESAR CALIMLIM & EMILY HARBORD**  
Music Performance Students

# WHAT CAN I DO?

## LEVEL 1

- Introduction to Music and Creative Performance Arts

## LEVEL 2

- Music Performance and Production
- Performing and Production Arts

## LEVEL 3

- Music Performance and Production
- Performing and Production Arts
- Bath Theatre Academy

## PROGRESSION OPTIONS

- Employment
- Degree Apprenticeship
- University Degree in sector subjects including:
  - Popular Music Performance
  - Creative Music Technology
  - Multimedia Journalism
  - Stage Management
  - Sound Engineering
  - Commercial Music
  - Music Production
  - Musical Theatre
  - Theatre Studies
  - Script writing
  - Songwriting
  - Directing
  - Acting

## CAREER OPTIONS INCLUDE:

- Actor
- Musician
- Comedian
- Song Writer
- Music Teacher
- Stage Manager
- Sound Engineer

**SCAN ME FOR UP TO DATE COURSES IN THIS SECTOR**





# DIGITAL - COMPUTING & MEDIA

WEST OF ENGLAND  
INSTITUTE OF  
TECHNOLOGY

## COURSES INCLUDE:

- + Introduction to Digital and Business (Level 1)
- + Creative Digital Media Production (Level 2 & 3)
- + Digital (T-Level Foundation Year) (Level 2) **T-LEVEL**
- + T-Level Computing: Digital Production, Design and Development (Level 3) **T-LEVEL**
- + T-level Computing: Digital Business Services (Level 3) **T-LEVEL**
- + HNC in Digital Technologies (Cyber Security and Cloud Networking) (Level 4)
- + HNC Creative Media Production (Level 4)

“ **AT COLLEGE, YOU’LL BE TRAINED FOR INDUSTRY, WHEREAS IF YOU GO ONTO SIXTH FORM, YOU’LL CONTINUE LEARNING THEORY. I’VE MET QUITE A FEW EMPLOYERS WHO HAVE COME INTO THE COLLEGE.** ”

**PETER DAY**  
IT Student

# WHAT CAN I DO?

## LEVEL 1

- Introduction to Digital & Business

## LEVEL 2

- Digital (T-Level Foundation Year)
- Creative Digital Media Production

## LEVEL 3

- T-Level Digital Business Services
- T-Level Digital Production, Design & Development
- Creative Digital Media Production

## LEVEL 4

- Digital Technologies HNC
- Creative Media Production HNC

## PROGRESSION OPTIONS

- T-level Progression Option
- Employment
- Degree Apprenticeship
- University Degree in sector subjects including:
  - Game Design & Production
  - Virtual Reality Design
  - Computer Science
  - Cyber Security
  - Programming
  - Web Design
  - Computing
  - Animation
  - Film

## CAREER OPTIONS INCLUDE:

- Illustrator
- Web Designer
- CAD technician
- Cinematographer
- TV or Film Director
- Web Content Editor
- E-Learning Developer
- IT Security Co-Ordinator

**SCAN ME FOR UP TO DATE COURSES IN THIS SECTOR**



# BUSINESS

## COURSES INCLUDE:

- + Introduction to Business and Digital (Level 1)
- + Business (T-Level Foundation Year) (Level 2) **T-LEVEL**
- + T-Level Management and Administration (Level 3) **T-LEVEL**
- + BTEC Extended Certificate in Marketing (Level 3) 
- + Leadership and Management for England HNC (Level 4)

“ I NEVER WOULD HAVE SEEN MYSELF DOING THIS WHEN I WAS HOME-SCHOOLED, BUT NOW IT'S ONE OF THE BEST THINGS I'VE EVER DONE; THE EXPERIENCES I'VE HAD AND FRIENDS I'VE MADE ARE AMAZING! DON'T SECOND GUESS YOURSELF. ”

**LEMARNIE**

Level 2 Business

T-Level Foundation Year Student

# WHAT CAN I DO?

## LEVEL 1

- Introduction to Business and Digital

## LEVEL 2

- Business (T-Level Foundation Year)

## LEVEL 3

- BTEC Extended Certificate in Marketing
- T-Level Management and Administration

## LEVEL 4

- Leadership and Management for England (HNC)

## PROGRESSION OPTIONS

- Employment
- Degree Apprenticeship
- University Degree in sector subjects including:
  - Business Management
  - Fashion Branding and Communication
  - Fashion Buying and Merchandising
  - Economics
  - Marketing
  - Finance
  - Law

## CAREER OPTIONS INCLUDE:

- Secretary
- Office Manager
- Admin Assistant
- Marketing Officer
- Personal Assistant
- Business Analyst
- Business Adviser
- Business Project Manager
- Business Development Manager

**SCAN ME FOR UP TO DATE COURSES IN THIS SECTOR**



# ANIMAL CARE

## COURSES INCLUDE:

- + Introduction to Animal Care (Entry Level 3)
- + Animal Care (Level 1 & 2)
- + Veterinary Care Support (Level 2)
- + Animal Management (Level 3)

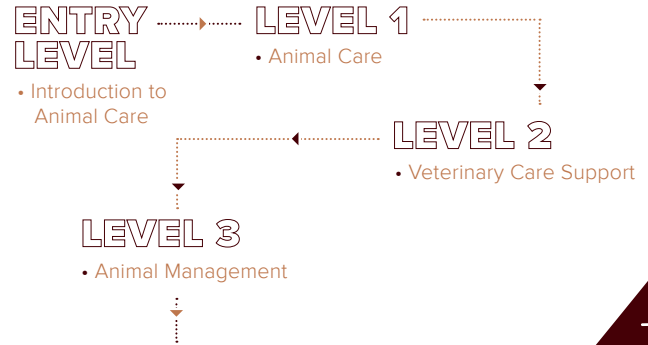


**I HAVE ALWAYS LOVED ANIMALS. I ENJOY THE MORE PRACTICAL ELEMENTS OF THE COURSE RATHER THAN THE CLASSROOM. THE WORK PLACEMENT HAS BEEN GOOD, YOU CAN HAVE FUN BUT DO TAKE THE COURSE SERIOUSLY. WITH MY NEW QUALIFICATION, I AM HOPING TO GO TO THE UNIVERSITY OF EXETER TO CONTINUING STUDY MARINE BIOLOGY.**



**EMMA LOXTON**  
Animal Care Student

# WHAT CAN I DO?



## PROGRESSION OPTIONS

- Employment
- Apprenticeship
- University Degree in sector subjects including:
  - Wildlife Conservation
  - Biomedical Science
  - Primary Education\*
  - Canine Therapy
  - Veterinary Nurse
  - Animal Welfare
  - Marine Biology
  - Zoology

\*may require some work experience in a school

## CAREER OPTIONS INCLUDE:

- Zookeeper
- Animal Trainer
- Kennel Worker
- Veterinary Nurse
- Animal Technician
- Animal Care Worker
- Canine Hydrotherapist

**SCAN ME FOR UP TO DATE COURSES IN THIS SECTOR**



# HAIR, BEAUTY & SPA THERAPIES

## COURSES INCLUDE:

- + Introduction to Hair and Beauty (Level 1)
- + Beauty (T-Level Foundation Year) **T-LEVEL** (Level 2)
- + Hair with Barbering Digital Badge (T- Level Foundation Year) (Level 2) **T-LEVEL**
- + T Level in Hairdressing, Barbering & Beauty Therapy **T-LEVEL**
- + Hair and Beauty Therapy (Level 3)
- + Complementary Therapies (Level 3)
- + Production and Theatrical Arts Make Up (Level 3)

“ I LOVED THE TRIPS TO DIFFERENT SPAS, THIS GAVE ME A GREAT INSIGHT INTO THE INDUSTRY AND HOW DIFFERENT SPAS OPERATED. I PLAN TO SET UP MY OWN PRACTICE IN THE FUTURE WHEN I FEEL I HAVE HONED MY SKILLS ENOUGH. ”

**JOSH**

Complementary Therapies Student

# WHAT CAN I DO?

## LEVEL 1

- Introduction to Hair and Beauty

## LEVEL 2

- Barbering & Hairdressing (T-Level Foundation Year)
- Beauty (T-Level Foundation Year)

## LEVEL 3

- Hairdressing
- Beauty Therapy & Spa
- Hair & Beauty Therapy
- Complementary Therapies
- Production and Theatrical Arts Make Up

## PROGRESSION OPTIONS

- Employment
- Degree Apprenticeship
- University Degree in sector subjects including:
  - Complimentary Healthcare
  - Media/Fashion Make-Up
  - Complimentary Studies
  - Theatrical Make-Up
  - Make-Up Artistry
  - Prosthetics and Special Effects Make-up

## CAREER OPTIONS INCLUDE:

- Barber
- Masseuse
- Hairdresser
- Make-up Artist
- Beauty Therapist
- Theatrical Make-up Artist
- Complementary Therapist

**SCAN ME FOR UP TO DATE COURSES IN THIS SECTOR**



# HEALTH

## COURSES INCLUDE:

- + Introduction to Health & Social Care (Level 1)
- + Health (T-Level Foundation Year) **T-LEVEL** (Level 2)
- + T-Level Health **T-LEVEL**
- + Health and Social Care (Level 3)



**I REALLY ENJOYED GAINING MY INDEPENDENCE AND LEARNING THE UNITS AT COLLEGE, I CAN NOW RELATE BACK TO THEM ON MY UNIVERSITY COURSE. USE ALL THE RESOURCES AVAILABLE TO YOU, LIKE TUTORS, CAREERS ADVISORS ETC, SO YOU FEEL REALLY PREPARED TO MAKE THE RIGHT CHOICES AFTER YOU LEAVE COLLEGE.**



**RUBY**

Health & Social Care Student



# WHAT CAN I DO?

## LEVEL 1

- Introduction to Health & Social Care

## LEVEL 2

- Health (T-Level Foundation Year)

## LEVEL 3

- Health and Social Care
- T-Level Health

## PROGRESSION OPTIONS

- Employment
- Degree Apprenticeship
- University Degree in sector subjects including:
  - Dental Technology
  - Paramedic Science
  - Adult/Child/Mental Health Nursing
  - Youth Studies
  - Social Work
  - Midwifery

## CAREER OPTIONS INCLUDE:

- Nurse
- Midwife
- Youth Worker
- Phlebotomist
- Health Visitor
- Health Trainer
- Healthcare Assistant
- Palliative Care Assistant

**SCAN ME FOR UP TO DATE COURSES IN THIS SECTOR**



# SPORT & SPORTS ACADEMIES

## COURSES INCLUDE:

- + Sport (Level 2)
- + Gym Instructing (Level 2)
- + Personal Training (Level 3)
- + Sport and Exercise Science (Level 3)
- + Sports Coaching and Development (Level 3)
- + Sport (Football Academy)
- + Sport (Women's Rugby Academy)
- + Sport (Cricket Academy)
- + HNC/HND Sport Coaching & Exercise Science (Level 4/5)

in partnership with:



in partnership with:



**“ COLLEGE HAS HELPED ME LEARN MULTIPLE NEW SKILLS AND GAINED EXPERIENCES THAT HAVE INCREASED MY CONFIDENCE. ”**

**ANDREW KEIGHLEY**  
Sport and Exercise Student

# WHAT CAN I DO?

## LEVEL 2

- Sport (Including access to the academies)
- Gym Instructing (Including access to the academies)

## LEVEL 3

- Personal Training for Health, Fitness & Performance
- Sport & Exercise Science
- Sports Coaching & Development (Including access to the academies)

## LEVEL 4/5

- HNC/HND Sports, Coaching & Exercise Science

## PROGRESSION OPTIONS

- Employment
- Degree Apprenticeship
- University Degree in sector subjects including:
  - Sport Science and Exercise
  - Sport Management and Coaching
  - Physical Education
  - Physiotherapy
  - Sport Therapy
  - Dietetics
  - Nutrition

## CAREER OPTIONS INCLUDE:

- Coach
- Dietitian
- Nutritionist
- Sport Therapist
- Physiotherapist
- Personal Trainer
- Outdoor Activity Instructor
- Physical Education Teacher

**SCAN ME FOR UP TO DATE COURSES IN THIS SECTOR**



# EARLY YEARS & EDUCATION

## COURSES INCLUDE:

- + Introduction to Childcare (Level 1)
- + Early Years (T-Level Foundation Year) (Level 2) **T-LEVEL**
- + T-Level Education and Childcare **T-LEVEL**
- + Education Studies for Teaching Assistants FdA (Level 4)

**I ENJOY BEING ABLE TO PRACTICE WHAT WE HAVE BEEN TAUGHT IN REAL LIFE AT OUR CRÈCHE, THE COURSE IS REALLY INTERACTIVE. I HOPE TO BE ABLE TO CONTINUE ONTO THE NEXT LEVEL, AND GO INTO THE INDUSTRY AS A SOCIAL WORKER.**

**LAINIEY OSBORNE**  
Childcare Student

# WHAT CAN I DO?

## LEVEL 1

- Introduction to Childcare

## LEVEL 2

- Early Years (T-Level Foundation Year)

## LEVEL 3

- T-Level Education and Childcare (includes license to practice)

## LEVEL 4

- Education Studies for Teaching Assistants FdA

## PROGRESSION OPTIONS

- Employment
- Norland Nannies
- Degree Apprenticeship
- University Degree in sector subjects including:
  - Educational Psychology
  - Youth Studies
  - Social Work
  - Education

## CAREER OPTIONS INCLUDE:

Teacher  
Childminder  
Social Worker  
Nursery worker  
Nursery manager  
Teaching Assistant  
Educational Psychologist

**SCAN ME FOR UP TO DATE COURSES IN THIS SECTOR**



# HOSPITALITY & TOURISM

## COURSES INCLUDE:

- + Introduction to Hospitality, Catering and Tourism (Level 1)
- + Hospitality, Travel and Tourism (Level 2)
- + Travel and Tourism (Level 3)
- + Professional Cookery (Level 2 & 3)
- + T-Level Catering **T-LEVEL**

**I ENJOYED THE COURSE AS THE LEARNING WAS FUN AND THE SECTOR IS SO INTERESTING, THERE ARE SO MANY THINGS TO LEARN ABOUT IN THE INDUSTRY. I ALSO REALLY ENJOYED THE OPPORTUNITY TO GO ON TRIPS ESPECIALLY THE DISNEYLAND PARIS TRIP.**

**ADAM ROBERTS**  
Travel and Tourism Student

## WHAT CAN I DO?

### LEVEL 1

- Introduction to Hospitality, Catering and Tourism



### PROGRESSION OPTIONS

- Employment
- Degree Apprenticeship
- University Degree in sector subjects including:
  - Food Science and Culinary Innovation
  - Confectionary and Patisserie Science
  - International Tourism & Hospitality
  - Airline and Airport Management
  - Business Management
  - Tourism Management
  - Patisserie Technology
  - Professional Cookery
  - Event Management

### CAREER OPTIONS INCLUDE:

Chef  
Baker  
Chocolatier  
Airline Crew  
Travel Agent  
Tourism Manager  
Catering Manager  
Event Management  
Restaurant Manager

**SCAN ME FOR UP  
TO DATE COURSES  
IN THIS SECTOR**





# PROTECTIVE SERVICES & SOCIAL SCIENCES

## COURSES INCLUDE:

- + Criminology and Law (Level 2) (Public Services)
- + Uniformed Protective Services (Level 3)
- + Applied Psychology and EPQ (Level 3)
- + Applied Criminology and Law (Level 3)
- + Forensic and Criminal Investigation (Level 3)



**I AM INTENDING ON USING THE SKILLS AND QUALIFICATIONS THAT I HAVE GAINED TO JOIN THE POLICE. I WOULD LIKE TO WORK MY WAY UP THE POLICE RANKS AND BECOME A DETECTIVE IN THE FUTURE.**

**MILLIE**

Forensic Science & Criminal Investigation Student



# WHAT CAN I DO?

## LEVEL 2

- Criminology and Law (Public Services)



## LEVEL 3

- Uniformed Protective Services
- Forensic and Criminal Investigation
- Applied Psychology and EPQ
- Applied Criminology and Law



## PROGRESSION OPTIONS

- Employment
- Degree Apprenticeship
- University Degree in sector subjects including:
  - Professional Policing
  - Philosophy and Ethics
  - Forensic Science
  - Criminology
  - Law



## CAREER OPTIONS INCLUDE:

- The Army Firefighter
- The Royal Navy Search & Rescue
- The Royal Air Force
- Emergency Call Handler
- Prison and Probation Service

**SCAN ME FOR UP TO DATE COURSES IN THIS SECTOR**



# CONSTRUCTION & TRADES

## COURSES INCLUDE:

- + Introduction to Construction Skills (Entry Level 3)
- + Plumbing (Level 1)
- + Electrical Installation (Level 1)
- + Bricklaying (Level 1)
- + Plumbing Studies (Level 2)
- + Carpentry & Joinery (Level 1)
- + Electrical Installation (Level 2)
- + Site Carpentry (T-Level Foundation Year) (Level 2) **T-LEVEL**
- + Bricklaying (T-Level Foundation Year) (Level 2) **T-LEVEL**
- + Stonemasonry (Level 2 & 3)
- + Construction in the Built Environment (Level 3)#
- + T-Level Onsite Construction **T-LEVEL**
  - + Construction HNC (Level 4)
  - + Construction HND (Level 5)



I CHOSE THIS COURSE BECAUSE I WANT TO BECOME A QUALIFIED ELECTRICIAN, I'M ENJOYING THE RANGE OF PRACTICAL OPTIONS.



JADE

Electrical Installation Student

# WHAT CAN I DO?

## ENTRY LEVEL

- Introduction to Construction Skills

## LEVEL 1

- Bricklaying
- Plumbing
- Electrical
- Carpentry & Joinery

## LEVEL 2

- Site Carpentry
- Stonemasonry
- Bricklaying
- Electrical Installation
- Plumbing

## LEVEL 3

- Stonemasonry
- Construction in the Built Environment

## LEVEL 4/5

- Construction HNC/HND

## PROGRESSION OPTIONS

- Employment
- Degree Apprenticeship
- University Degree in sector subjects including:
  - Construction Management
  - Princes Trust Building Craft Programme
  - Heritage Skills
  - Surveying

## CAREER OPTIONS INCLUDE:

- Plumber
- Bricklayer
- Carpenter
- Electrician
- Stonemason
- Site Manager
- Heritage Officer
- Building Surveyor
- Property Maintenance

SCAN ME FOR UP TO DATE COURSES IN THIS SECTOR



# ENGINEERING & MECHANICS

## COURSES INCLUDE:

- + Introduction to Motor Vehicle (Entry Level 3)
- + Motor Vehicle and Transport Maintenance (Level 1)
- + Motor Vehicle (Level 2)
- + Engineering (T-Level Foundation Year) **T-LEVEL**
- + T-Level Engineering & Manufacturing **T-LEVEL**
- + Mechanical Engineering HNC/HND
- + Electrical Engineering HNC/HND
- + General Engineering HNC/HND

“  
**MY TIME AT BATH COLLEGE HAS BEEN VERY POSITIVE. MY TUTORS HAVE BEEN REALLY SUPPORTIVE AND HAVE MADE LEARNING ABOUT VEHICLES INTERESTING WITHOUT EVER MAKING ME FEEL ANXIOUS TO ASK QUESTIONS.**  
”

**JUSTIN**  
Motor Vehicle Student

# WHAT CAN I DO?

## ENTRY LEVEL

- Motor Vehicle

## LEVEL 1

- Motor Vehicle and Transport Maintenance

## LEVEL 2

- Engineering (T-Level Foundation Year)
- Motor Vehicle

## LEVEL 3

- T-Level Engineering and Manufacturing

## LEVEL 4/5

- Mechanical Engineering HNC/HND
- Electrical Engineering HNC/HND
- General Engineering HNC/HND

## PROGRESSION OPTIONS

- Employment
- Degree Apprenticeship
- University Degree in engineering sector subjects including:
  - Mechanical
  - Motorsport
  - Electrical
  - Energy
  - Civil

## CAREER OPTIONS INCLUDE:

- Mechanic
- Civil Engineer
- CNC Machinist
- The Armed Forces
- Electrical Engineer
- Mechanical Engineer
- Aeronautical Engineer
- Engineering Operative
- Manufacturing Technician

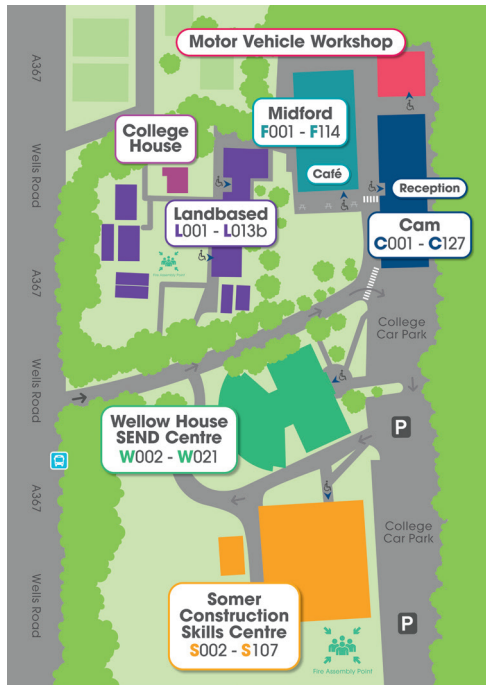
**SCAN ME FOR UP TO DATE COURSES IN THIS SECTOR**



# CAMPUS MAPS AND COLLEGE ADDRESSES

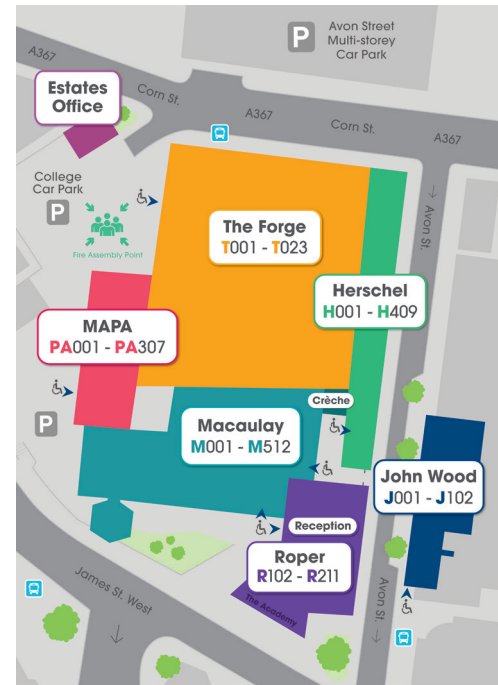
Our Somer Valley Campus is located in Westfield, between Radstock and Midsomer Norton. The main entrance is on Wells Road (A367) and the reception is in the Cam Building.

**SVC Address:** Bath College, Wells Road, Radstock, BA3 3RW



Our City Centre Campus is located in the centre of Bath. Our main entrance is on James St West and the reception is on the ground floor of the Roper Building.

**CCC Address:** Bath College, Avon Street, Bath, BA1 1UP





OPEN EVENTS

+44 (0)1225 328 720

✉ info@bathcollege.ac.uk

🖱 bathcollege.ac.uk



@bathcollege



*Please join us in protecting the environment  
by recycling this miniguide after use.*

*Remove cover before recycling.*